



KAESER
COMPRESSORS®



MOBILAIR Product Range

with CE conformity

Portable Compressors M 13 – M 500-2

With the world-renowned SIGMA PROFILE®

Max. flow rate 45.8 m³/min (1600 cfm)

www.kompresory-chlazení.cz

The “Made in Germany” quality stamp

For more than 100 years, the name of KAESER KOMPRESSOREN has been synonymous with innovative products and cost-efficient complete solutions. Established in 1919 by Carl Kaeser Senior as a machine workshop in the Bavarian town of Coburg, the company has since flourished into a successful manufacturer of compressors and compressed air systems with a global presence. In its manufacturing processes, KAESER today relies on the production methods of tomorrow – the smart factory. This means that, in accordance with highly efficient Industrie 4.0 structures, the production of compressors, blowers, controllers and treatment components is both intelligent and fully networked, resulting in a production process that benefits from extreme precision, optimised productivity and reduced delivery times. KAESER is represented in more than 140 countries by a combination of subsidiaries and authorised distribution partners, whilst a constant and ongoing customer dialogue supports a continuous improvement process for all products and services. The result? Maximum levels of reliability and efficiency with minimal maintenance requirements.

MOBILAIR – Portable compressors

Incredibly versatile

MOBILAIR portable compressors from KAESER stand out for their incredible versatility. Whether mobile or stationary, powered by combustion engine or electric motor – these portable powerhouses can be specifically adapted for any application, thanks to their impressively broad operating range.

Service-friendly and easy to access

Portable compressors are simple to operate and allow excellent accessibility to all maintenance-relevant components, making service work quick and efficient. Optional customised maintenance contracts are also available.

Low emissions thanks to EU Stage V

All MOBILAIR units are designed to deliver more compressed air for lower emissions. Hence, these portable all-rounders are equipped with drive engines that comply with EU Stage V emissions standards. KAESER has always set a good example when it comes to protecting the environment – in 2012, they became the first European portable compressor manufacturer to offer exhaust gas after-treatment.

Intuitive operation

Whether mechanically or electronically controlled, clear icons allow language-neutral navigation through the extensive menu options, making operation child's play – even in the rapid-fire environment of a construction site.

Reliability with superb residual value retention

MOBILAIR portable compressors are well equipped to face the gruelling continuous operation in harsh conditions required on many construction sites. They also perform reliably and safely in environments with tough climatic conditions. A durable polyethylene enclosure (availability dependent on model) makes MOBILAIR units especially rugged and ensures superb residual value retention.



MOBILAIR units are also available for:

Extreme ambient conditions of all types – from hot temperatures to high humidity levels and installation altitudes up to 4500 m.

What is more, KAESER offers portable compressors equipped with engines capable of running on fuel with a high sulphur content, as well as engines in compliance with emissions regulations in the USA and Canada.



Innovation, ex-works

The numerous different models of the MOBILAIR range of portable compressors are all manufactured at KAESER's headquarters in Coburg, Northern Bavaria. Equipped with the very latest technology, the recently modernised portable compressor plant boasts state-of-the-art equipment, including a TÜV-certified sound testing area for free-field sound level measurement, a complete powder-coating facility and efficient manufacturing logistics.

SIGMA airends – More compressed air for less energy

At the heart of every MOBILAIR system lies a premium-quality rotary screw airend featuring KAESER's energy-saving SIGMA PROFILE rotors. Meticulous manufacturing and precision-aligned anti-friction bearings guarantee long service life and maximum reliability.



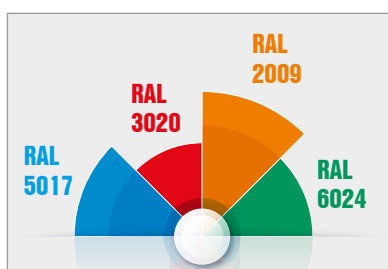


Image: MOBILAIR M13



Petrol engine with electric starter

Compact models are equipped with environmentally friendly Honda petrol engines, which meet EU Stage V emissions standards. A convenient start-up at the turn of a key guarantees the compressors are ready for immediate operation, whilst a 20-litre fuel tank ensures they can endure particularly long shifts.



Special colours available on polyethylene enclosures

For PE enclosures, the following special colours are readily available: blue – equivalent to RAL 5017, red – equivalent to RAL 3020, orange – equivalent to RAL 2009 and green – equivalent to RAL 6024. Customised colours for the enclosure are available upon request.



Optional frame

Compact machines can be operated in conjunction with an external condensate treatment system. The frame is delivered ready for connection, complete with an aftercooler and condensate separator for cool, condensate-free compressed air. A filter combination is also available for compressed air that is technically oil-free.

Compact machines

Small but versatile

Even the smallest MOBILAIR compressors are more than capable of powering pneumatic spades, breakers, drills, saws, screwdrivers, grinders, impact moles and sewer robots. The 15-bar version is the ideal choice when it comes to trenchless fibre-optic cable laying or leakage tests. Available options include an external aftercooler for delivering cool, condensate-free compressed air or a filter combination for technically oil-free compressed air.



Image: MOBILAIR M13

Technical specifications

Model	Flow rate at gauge working pressure						Engine type	Rated engine power kW	Fuel tank capacity l	Operating weight kg	Compressed air connection	Compressed air treatment
		100 psi 7 bar	145 psi 10 bar	175 psi 12 bar	190 psi 13 bar	215 psi 15 bar						
M 13	m³/min	1.2	1.0	0.9	0.85	-	Honda GX 630	15.5	20	202	1 x G ½	A / F
	cfm	42	35	32	30							
M 17	m³/min	-	-	-	-	1.0	Honda GX 630	15.5	20	204	1 x G ½	A / F
	cfm	-	-	-	-	35						

Lightweight – under 750 kg

Flexible transportation – no BE licence required

The unbraked, lightweight chassis is particularly flexible. On account of the fact that it weighs in at under 750 kg, no special trailer licence is required to be able to tow it. These portable compressors can simply be pulled into position manually on the construction site. The M 27 can also be specified with an optional 6.5 kVA generator.



Image: MOBILAIR M 59 lightweight version



Anti-Frost Control

Specially developed by KAESER for use on portable compressors, the patented Anti-Frost Control automatically adjusts operating temperature in relation to ambient. In combination with the optional tool lubricator, this feature prevents air tools from freezing up and therefore significantly extends their service life.



PE enclosure

Made from roto-moulded polyethylene, this modern, double-walled sound enclosure ensures long-term residual value retention and is both corrosion and scratch-resistant. In 2002, KAESER became the first compressed air systems manufacturer to offer portable compressors constructed from this robust material.



Accessibility

In spite of the compact dimensions of these models, gull-wing doors or a wide-angle enclosure opening allow simple and convenient access to the intelligently laid-out interior for maximum ease of maintenance.



Technical specifications

Model	Flow rate at gauge working pressure						Engine type	Rated engine power	Fuel tank capacity	Operating weight	Compressed air connection	Compressed air treatment	Optional generator
		100 psi 7 bar	125 psi 8.6 bar	145 psi 10 bar	175 psi 12 bar	200 psi 14 bar	kW	kW	l	kg			
M 20	m³/min	2.0	-	-	-	-	Kubota D722	14	30	457	2 x G ¾	-	-
	cfm	71											
M 27	m³/min	2.6	-	2.1	1.9	1.6	Kubota D1105	17.9	40	575	2 x G ¾	A / B / F / G	6.5 kVA
	cfm	92		74	67	57							
M 59 pV	m³/min	5.5	pV	4.7	pV	3.8	Hatz 3H50TICD	42	60	740	2 x G ¾ 1 x G 1	A	-
	cfm	195		165		135							



Optional air treatment equipment

An aftercooler and a centrifugal separator ensure cool, condensate-free compressed air. In order to produce pure, dry compressed air to a defined quality class, additional air treatment components such as filters and heat recovery systems can also be specified.



Generator option

Powerful all-rounders such as the M 59 PE or M 82 models are available with the option of either an 8.5 or a 13 kVA generator. Ensuring perfect interplay with the engine management system, the SIGMA CONTROL SMART compressor controller delivers maximum compressed air availability relative to power demand.



M 58 utility

The M 58 utility can be set up on the loading bed of an HGV and requires only minimal space. This portable powerhouse is designed and optimised for permanent operation from a loading bed and offers excellent accessibility to the control panel, fuel tank and oil level gauge from the front side of the unit. The slender unit configuration ensures more m³ of compressed air per m² of surface space.

Exceptional power and versatility

Intelligent controller – with or without generator

The MOBILAIR portable compressors in this model series are exceptionally versatile. Optionally available with synchronous generators (M 59 PE and M 82) and/or compressed air treatment components, they are also offered in a variety of maximum pressure variants, thereby ensuring that the perfect model is always available for every application.



Image: MOBILAIR M 59 PE

Technical specifications

Model	Flow rate at gauge working pressure						Engine type	Rated engine power kW	Fuel tank capacity l	Operating weight kg	Compressed air connection	Compressed air treatment	Optional generator
		100 psi 7 bar	125 psi 8.6 bar	145 psi 10 bar	175 psi 12 bar	200 psi 14 bar							
M 58utility	m³/min	5.1	4.35	-	-	-	Kubota V2403-CR	36	105	1020	2 x G ¾ 1 x G 1	A	-
	cfm	180	155										
M 59 PE pV	m³/min	5.5	pV	4.7	pV	3.8	Hatz 3H50TICD	42	80	896	2 x G ¾ 1 x G 1	A / B / F / G	8.5/13 kVA
	cfm	195		165		135							
M 65 PE pV	m³/min	6.6	pV	5.6 / 5.2	pV	4.3	Kubota V2403CR-T	48.6	90	-	2 x G ¾ 1 x G 1	A / B / F / G	-
	cfm	230		195 / 185		150							
M 82	m³/min	8.4	6.8	6.1	5.5	-	Kubota V3307-CR-T	54.6	140	1580	3 x G ¾ 1 x G 1 ½	A / B / F / G	8.5/13 kVA
	cfm	295	240	215	195								

Efficient powerhouses

Impressive efficiency thanks to innovative compressor control

The SIGMA CONTROL MOBIL compressor controller is simple to operate and provides perfect coordination between the drive engine and compressor package, significantly enhancing fuel efficiency.

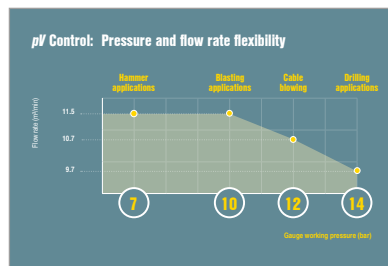


Image: MOBILAIR M 171



Sigma Control Mobil

The Sigma Control Mobil controller provides exceptionally intuitive operation, since the system can be operated using just three buttons. Infinitely adjustable pressure settings can be made using the simple arrow keys and take effect immediately. Using state-of-the-art electronic engine management, this advanced compressor controller ensures optimum compressed air availability, fuel efficiency and reduction of exhaust gases.



pV Control

Thanks to pV Control, maximum pressure (p) – adjustable in steps of 0.1 bar – directly influences the maximum possible flow rate (V), thereby providing even greater flexibility in terms of both pressure and flow rate. This feature is particularly beneficial when working with longer hose lines.



MOBILAIR with Mercedes-Benz

As the largest oil-injected rotary screw compressor in the MOBILAIR family, the M 250 is the pinnacle of the range. Delivering flow rates up to 25.4 m³/min, this portable powerhouse impresses with its highest possible levels of efficiency and energy-saving, whilst operating at maximum performance and reliability.



Technical specifications

Model	Flow rate at gauge working pressure						Engine type	Rated engine power kW	Fuel / AdBlue tank capacity l	Operating weight kg	Compressed air connection	Compressed air treatment	Optional generator
		100 psi 7 bar	125 psi 8.6 bar	145 psi 10 bar	175 psi 12 bar	200 psi 14 bar							
M 118 pV	m³/min	11.5	pV	10.2	-	-	Deutz TCD 3.6 L04	85	170 / 10	1990	3 x G ¾ 1 x G 1 ½	A / B / F / G	-
	cfm	405		360									
M 125 pV	m³/min	11.5	pV			9.7	Deutz TCD 4.1 L04	105	170 / 10	2080	3 x G ¾ 1 x G 1 ½	A / B / F / G	13 kVA
	cfm	405				345							
M 171	m³/min	-	17	-	-	-	Deutz TCD 6.1 L06	128	200 / 20	2800	3 x G ¾ 1 x G 2	A / B / F / G	-
	cfm	-	600										
M 171 pV	m³/min	-	-	15.5	pV	11.5	Deutz TCD 6.1 L06	128	200 / 20	2800	3 x G ¾ 1 x G 2	A / B / F / G	-
	cfm	-	-	550		405							
M 250	m³/min	-	25.4	23.5	21	18.5	Mercedes-Benz OM 936 LA	202	250 / 25	3780	3 x G ¾ 1 x G 2	A / B / F / G	-
	cfm	-	900	830	740	655							



Versatility in action

KAESER's e-power units are particularly flexible when it comes to their area of application. They are ideally suited as temporary replacement systems during maintenance work at industrial stations, as well as for use as rental units for a wide variety of applications.



Compressed air treatment

An aftercooler and a centrifugal separator ensure cool, condensate-free compressed air. In order to produce pure, dry compressed air to a defined quality class, additional air treatment components such as filters and heat recovery systems can also be specified.



DUAL Control

When a system is equipped with the optional DUAL control mode, the desired cut-in and cut-out pressure can be adjusted easily via the controller. Information about the prevailing network pressure is sent to the machine via a quick coupling, where it is processed by the controller.

e-power

The alternative drive system for portable compressors

Portable compressors from the MOBILAIR e-power series truly come into their own wherever there is an electrical power connection available. Their near-silent electric drive makes them the perfect choice for use in low emission and noise protection zones. The effects of noise from compressed air applications in tunnels or inside buildings are tamed by the compressors' emissions-free drive.



Image: MOBILAIR M255 E

Technical specifications

Model	Flow rate at gauge working pressure							Electric motor (400V)	Rated motor power kW	CEE power socket A	Operating weight kg	Compressed air connection	Optional compressed air treatment
		100 psi 7 bar	145 psi 10 bar	175 psi 12 bar	190 psi 13 bar	200 psi 14 bar	215 psi 15 bar						
M 13 E	m³/min	1.2	1.0	0.9	0.85	-	0.75	Siemens	7.5	25	187	1 x G ½	A / F
	cfm	42	35	32	30		27						
M 27 E	m³/min	2.6	-	-	-	-	-	Siemens	15	32	530	2 x G ¾	A / B
	cfm	92											
M 31 E	m³/min	3.15	2.6	2.3	-	1.9	-	Siemens	22	63	585	2 x G ¾	A / B
	cfm	110	92	81		67							
M 50 E	m³/min	5.0	3.8	-	-	-	-	Siemens	25	63	690	2 x G ¾, 1 x G 1	A
	cfm	180	135										
M 250 E	m³/min	25.0	20.4	-	-	16.2	-	Siemens	132	-	3150 - 3380	DN80	A / F
	cfm	885	720			570							
M 255 E	m³/min	-	24.7	19.9	-	-	-	Siemens	160	-	3660 - 3685	DN80	A / F
	cfm		785	705									

OILFREE.AIR

Industrial dry-runners with low emissions thanks to EU Stage V

The M 500-2 combines all the advantages of a two-stage, oil-free compression rotary screw compressor with those of a mobile unit for highest compressed air delivery volumes and levels of quality with unrivalled flexibility. Pressure is adjustable up to 10.3 bar. For industrial applications with high levels of air demand, the M 500-2 ensures a continuous supply of compressed air, even when maintenance or conversion work is required. Mounted on an auxiliary chassis or on skids, this compressed air behemoth can be transported easily, wherever it may be required.



Image: MOBILAIR M 500-2



Continuous operation or standby

Thanks to its generously sized fuel tank, the M 500-2 can run throughout two consecutive shifts and, when connected to an external tank, can even be run in continuous operation. For use as a standby, the M 500-2 is equipped with battery trickle charging and heating for instantaneous full load operation – from 0 to 100 in record time.



Suitable for use in refineries

The M 500-2 is equipped as standard with a certified spark arrester for refinery applications. The engine shut-off valve automatically shuts the machine down upon intake of combustible gases.



Unbeatable as a team-player

As a true team-player, the M 500-2 is rarely operated alone. Equipped with a connection for an external start signal from a master controller, as a backup system it starts up immediately on demand, thereby ensuring exceptional reliability – particularly when it comes to sensitive production processes.



Technical specifications

Model	Flow rate at gauge working pressure				Engine type	Rated engine power kW	Fuel / AdBlue tank capacity l	Operating weight kg	Compressed air connection	Compressed air treatment
		100 psi 7 bar	125 psi 8.6 bar	150 psi 10.3 bar						
M 500-2	m³/min	45.8	pV	38.0	Caterpillar C18	447.5	940 / 44.5	11800	1 x DN80 1 x G1	A
	cfm	1600		1340						

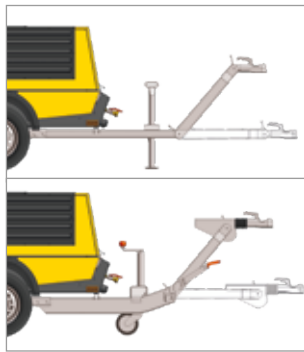
MOBILAIR options

- Standard
- Option

M 13 / M 17	M 20	M 27	M 58 utility	M 59	M 65	M 82	M 118	M 125	M 171	M 250	M 13E	M 27E / M 31E	M 50E	M 250E / M 255E	M 500-2
-------------	------	------	--------------	------	------	------	-------	-------	-------	-------	-------	---------------	-------	-----------------	---------

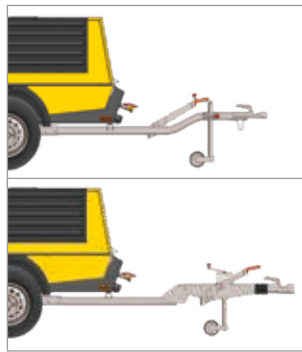
Chassis

Hand-pulled	●	-	-	-	-	-	-	-	-	-	●	-	-	-	-
Unbraked	-	●	●	-	○	-	-	-	-	○	-	●	●	-	●
Braked	-	○	○	-	●	●	●	●	●	●	-	○	○	-	-
Height-adjustable tow bar	-	●	●	-	●	●	●	●	●	●	-	●	●	-	●
Fixed tow bar	-	○	○	-	○	○	○	○	○	○	-	○	○	-	-
Stationary version	○	○	○	-	○	○	○	○	○	○	○	○	○	-	-
Skids	-	○	○	●	○	○	○	○	○	○	-	○	○	●	○



Height-adjustable tow bar without overrun and parking brake

Height-adjustable tow bar with overrun and parking brake



Fixed tow bar without overrun brake, with parking brake

Fixed tow bar with overrun and parking brake

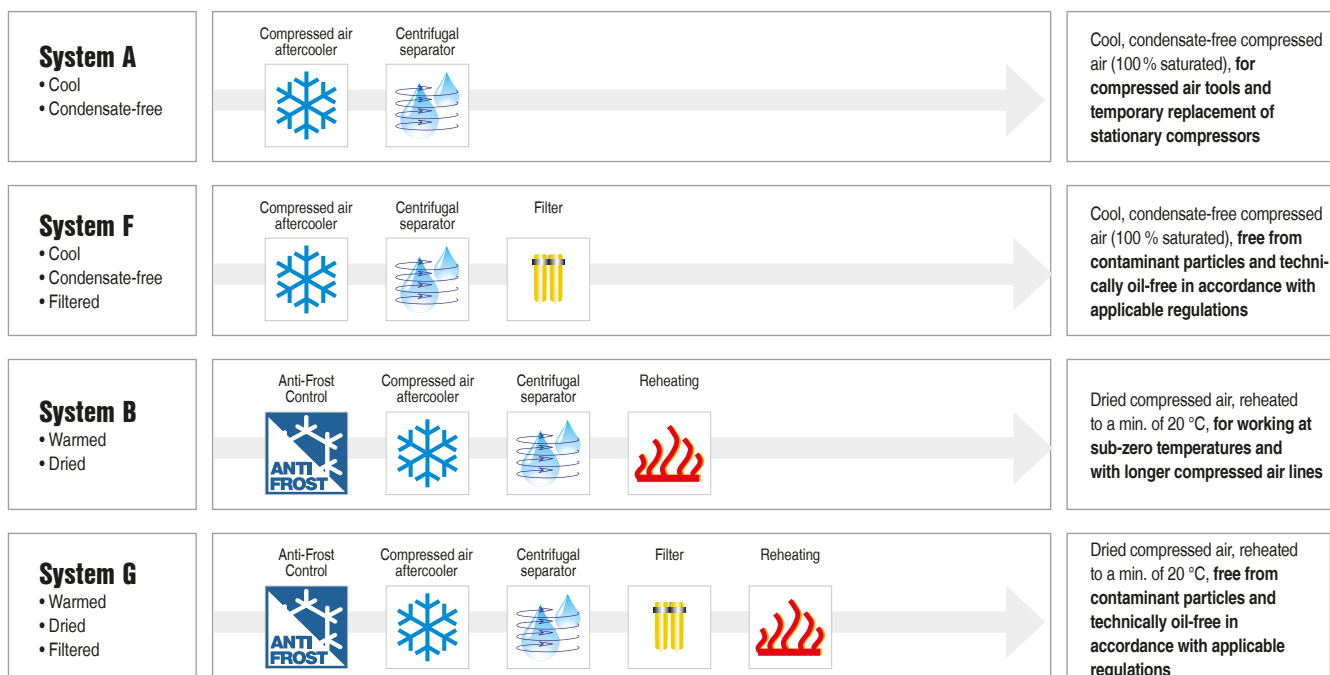


Stationary version

Skids

Compressed air treatment

Anti-Frost Control	-	●	●	●	●	●	●	-	-	-	-	-	●	●	-	-
Compressed air aftercooler	○	-	○	○	○	○	○	○	○	○	○	○	○	○	●	●
Microfilter combination	○	-	○	-	○	○	○	○	○	○	○	○	○	○	○	-
Reheating	-	-	○	-	○	○	○	○	○	○	-	○	-	-	-	-



Additional compressed air treatment systems are available upon request. Please contact KAESER for further details.

MOBILAIR options

- Standard
- Option

M13 / M17	M20	M27	M58utility	M59	M65	M82	M118	M125	M171	M250	M13E	M27E / M31E	M50E	M250E / M255E	M500-2
-----------	-----	-----	------------	-----	-----	-----	------	------	------	------	------	-------------	------	---------------	--------

Generator

8.5 kVA	-	-	○	-	-	-	-	-	-	-	-	-	-	-	-
8.5 kVA	-	-	-	-	○	-	○	-	-	-	-	-	-	-	-
13 kVA	-	-	-	-	○	-	○	○	-	-	-	-	-	-	-
Generator panel cover	-	-	-	-	-	-	○	●	-	-	-	-	-	-	-

Equipment

Special colour	○	○	○	○	○	○	○	○	○	○	○	○	○	○	○
PE enclosure	●	○	○	-	●	●	-	-	-	-	●	○	○	-	-
SIGMA CONTROL MOBIL	-	-	-	-	-	-	-	●	●	●	●	-	-	-	●
SIGMA CONTROL SMART	-	-	-	●	●	●	●	-	-	-	-	●	●	●	-
Control panel cover	-	-	-	●	●	●	●	●	●	●	●	-	●	●	●
Battery isolation switch	-	○	○	●	●	●	●	-	-	-	-	-	-	-	●
Telematics	-	-	-	○	○	○	○	○	○	○	○	-	○	○	●
Tool lubricator	-	○	○	○	○	○	○	-	-	-	-	-	○	○	-
Non-return valve (Standard from 10 bar)	○	-	○	●	●	●	●	●	●	●	●	●	●	●	●
Tool compartment	-	-	○	-	○	○	●	-	-	-	-	-	●	●	-
Hose reel	-	○	○	-	○	○	-	-	-	-	-	-	○	○	-
Document bag	-	○	○	○	○	○	○	●	●	●	●	-	○	○	●
Water separator for fuel	-	○	○	●	●	●	●	●	●	●	●	-	-	-	●
Spark arrester	-	○	○	○	○	-	○	●	●	●	●	-	-	-	●
Engine shut-off valve	-	○	○	-	○	-	-	○	○	○	○	-	-	-	●
Closed floor pan	-	●	○	●	○	○	○	○	○	○	○	-	○	○	●
Low-temperature version	-	○	○	○	○	○	○	○	○	○	○	-	○	○	○

TELEMATICS @ MOBILAIR

MOBILAIR units can be specified with a modem for connection to Industrie 4.0 systems. This can be connected directly either to the KAESER PLANT CONTROL CENTER or to an in-house fleet management system for the secure transfer of data regarding the technical status of the machine. In addition

to information on current operating hours and the precise physical location of the unit (including Geofencing), the system also provides valuable data such as duty-cycle analysis, maintenance planning and remote diagnostics.



Value add-ons for MOBILAIR



Compressed air aftercooler

The compressed air is cooled to 7°C above ambient temperature. Installed at an angle, the aftercooler allows accumulated condensate to drain away easily, whilst the hot exhaust gases from the engine serve to aid condensate evaporation.



Microfilter combination

In order to produce compressed air to a defined quality class, additional treatment components can be specified in addition to the aftercooler and centrifugal separator, such as a filter combination for compressed air that is technically oil-free.



Plate-type heat exchanger

A plate-type heat exchanger can be installed for reheating purposes. On models M 59 to M 171, the compressed air discharge temperature can be flexibly adjusted as per requirements.



Hose reel

The hose reel holds 20 m of lightweight hosing, which does not require fully reeling out in order to operate. A proper housing increases the availability of the connected tool.



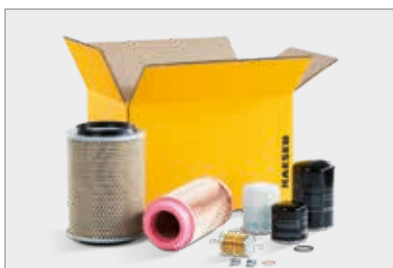
Hose + hose lubricator

Recommended accessory for compressors without a tool lubricator, for applications where the compressor is equipped with an integrated tool lubricator but is located further than 20 m away from the tool, or for when there is a height difference between compressor and tool.



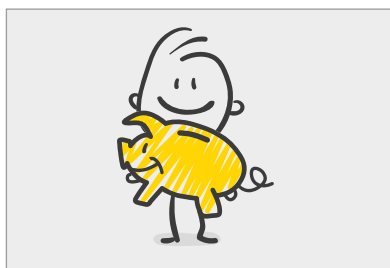
Service

KAESER's global service organisation ensures a reliable compressed air supply with the aid of a swift, computer-aided despatch of spare parts. Optional customised maintenance contracts are also available.



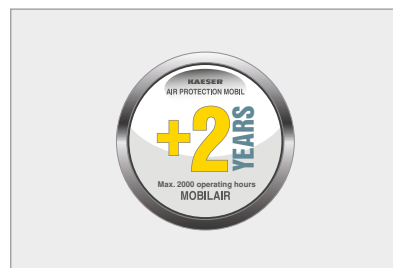
Genuine KAESER parts

Genuine KAESER parts are field-tested for exceptional reliability and durability, thereby guaranteeing the quality of all KAESER maintenance parts and spares. Compiled together into practical kits, the right parts are always at hand when needed, thus ensuring the continued availability of the compressor system.



Finance

Cutting-edge technology – with no investment costs? Tailored financing plans are available.



Warranty programme

KAESER AIR PROTECTION MOBIL allows you to extend your warranty – upon registration – for a further 2 years without any complicated contract negotiations (up to a maximum of 2,000 operating hours). And the best part is: During the warranty period, there are no additional costs besides standard maintenance costs.

Air tools

Model	Impact rate	Air consumption *)	Chuck - shank	Weight	Impact force	Weighted sum acceleration value **)	Specific power
	Strokes per min	m³/min		kg	Joules	m/s²	W/kg

Breakers

With hand grip

H 60	2142	0.4	S19x50	a)	6	12	5.5	71.5
H 95	1596	0.6	S22x82.5	b)	9.6	34	7.4	94.1
H 130	1452	0.6	S22x82.5	b)	12	40	6.6	80.5

With hand grip (vibration damped)

H 110 V	1596	0.8	S22x82.5	c	11	34	5.2	82.1
----------------	------	-----	----------	---	----	----	-----	------

With T-grip (vibration damped)

AH 150 V	1452	0.6	S22x82.5	d)	17	40	6.3	57.2
AH 180 V	1070	0.6	S26x108	d)	17.9	50	7.7	49.9
AH 200 V	1194	1.1	S26x108	d)	20.8	50	6.5	47.8
AH 240 V	1356	1.1	S28x152	d)	26.2	65	7.1	56.1
AH 280 V	1314	1.1	S32x152	d)	28	77	6	60.3

*) at 6 bar, **) as per ISO28927-10



Image: H 95



Image: AH 180 V

Hammer drills

With hand grip

BH 8	3660	0.5	S19x82.5	a)	8.6	8.5	15.4	53.3
BH 8	3660	0.5	S22x82.5	a)	8.6	8.5	15.4	53.3

With T-grip

BH 16	2440	1.6	S22x108	e)	18.9	30	19.0	47.2
BH 21	2740	2.1	S22x108	e)	24.4	40	17.7	59.6

With T-grip (vibration damped)

BH 16 V	2440	1.6	S22x108	e)	22.9	30	10.6	39.0
----------------	------	-----	---------	----	------	----	------	------

*) at 5 bar, **) as per ISO28927-10

a) Retaining cap, b) Retaining pin, c) Cross cap, d) Locking retaining cap, e) Retaining clip



Image: BH 16 V

Chisels

Matching chisels are available separately: Pointed chisel, flat chisel, scaling chisel, spade chisel

Drill bits

Matching drill bits are available separately: Monobloc bit, cone drill rod, core bit

Tool lubricator

Model	Weight kg	Length mm	Oil capacity l	Max. working pressure bar
SO 16	6	370	1.4	9



Image: incl. optional stand

The world is our home

As one of the world's largest manufacturers of compressors, blowers and compressed air systems, KAESER KOMPRESSOREN is represented throughout the world by a comprehensive network of branches, subsidiaries and authorised distribution partners in over 140 countries.

By offering innovative, efficient and reliable products and services, KAESER KOMPRESSOREN's experienced consultants and engineers work in close partnership with customers to enhance their competitive edge and to develop progressive system concepts that continuously push the boundaries of performance and technology. Moreover, decades of knowledge and expertise from this industry-leading systems provider are made available to each and every customer via the KAESER group's advanced global IT network.

These advantages, coupled with KAESER's worldwide service organisation, ensure that every product operates at peak performance at all times, whilst providing maximum availability.

